

S.M.S.L



# SU-6

## 使用说明书



本说明书的内容可能会随版本更改, 如有变动, 恕不另行通知

Ver 1.0

## 安全注意事项

- 请将本音响系统安装在通风良好、阴凉、干燥、干净的位置，远离直射阳光热源、振动、灰尘、潮湿或寒冷。
- 只能使用本机指定的电压。使用高于指定数值的电压很危险，而且可能导致火灾，损坏本机或造成人身伤害。对于使用高于指定电压造成的任何损害，我司将不负任何责任。
- 不要试图自行改造或修理本机。如果需要任何服务，请与销售或者我司客服人员联系。不管有任何理由，都没有打开机壳的必要。
- 如果打算长时间不使用本机（比如度假时），请从墙壁交流电源插座上断开电源线的连接。

### 重要提示：

本说明书所提到的产品规格和资讯仅供参考。如有内容更新，恕不另行通知。

## 保修条款

### 一、服务期限

佛山双木三林科技有限公司承诺产品的良好品质，产品自售出之后7天内正常使用情况下出现故障，客户可以选择退货或者保修（不影响二次销售才可退货）。正常使用一年内出现故障可以免费保修。

二、购买日期以销售商开出的购机发票或收据日期为准，网购可以交易截图为准。

### 三、有以下情况都不能享受“三包”服务

1. 一切人为因素损坏，包括非正常工作环境下使用或不按照说明书使用。
2. 用户私自拆机、改装、维修。
3. 使用非指定或许可的配件造成损坏的。
4. 机身的QC或保修贴损毁。
5. 不能出示有效购机凭证。
6. 不属于本公司产品。

### 四、保修方式为送修

此条款只适于中国大陆，其它地区请参考当地销售代理商的规定和国家法规。

## 产品特点

- 迷你尺寸设计,非常适合桌面使用;
- CNC一体化铣削工艺,简约时尚;
- ESS科技高端数模芯片ES9038Q2M;
- 高通最新蓝牙芯片支持LDAC 24bit/96kHz、APTX/HD、SBC、AAC;
- 4片高端双运放OPA1612和大量音频级元器件;
- 第二代XMOS方案支持DoP256和原生DSD512, PCM最高支持32bit/768kHz;
- 音频专用时钟处理电路,大大降低时钟抖动;
- 所有输入端口(蓝牙除外)均支持DSD传输,同轴和光纤支持DoP64;
- 内置专门设计的低噪声开关电源;
- 内置分立元件线性电源和多个模拟电路低噪声电源;
- 高品质镀金输入输出连接端子;
- 永不过时的钢化玻璃显示面板!
- 日本音响协会(JAS) Hi-Res认证;
- 配备全功能遥控器。

## 技术参数

输入方式	USB / 光纤/同轴/蓝牙		
输出方式	单端线路		
THD+N	0.0001% (-120dB)		
动态范围	单端线路	125dB	
信噪比	125dB		
输出阻抗	<10Ω		
USB传输方式	异步传输		
USB兼容性	Windows 7 / 8 / 8.1 / 10, Mac OSX, Linux		
位深	USB	1bit, 16~32bit	
	光纤/同轴	1bit, 16~24bit	
采样率	USB	PCM	44.1~768kHz
		DSD	2.8224~22.5792MHz
	光纤/同轴	PCM	44.1~192kHz
		DSD	DSD64(DoP)
蓝牙规格	5.0(支持SBC,AAC,aptX,aptX HD)		
消耗功率	5W		
待机功耗	<0.5W		
体积	140X28X105mm(WxHxD)		
重量	0.35kg		

规格时有变更,恕不另行通知。

## 温馨提示

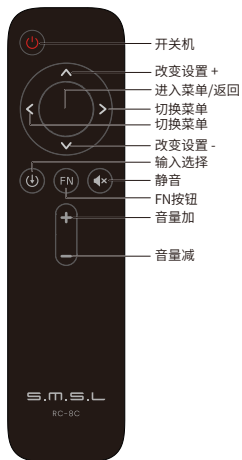
固件及驱动下载:

<http://www.smsl-audio.com/cn/download.asp>

## 关于遥控器

- 如果遥控器距离本机很近时操作仍无效，请用新电池更换。
- 如果要长时间不使用遥控器，请取出遥控器的电池。
- 按照电池处置的地方性法规处置废旧电池。

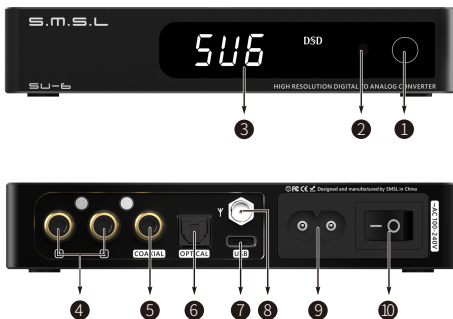
## 遥控器的使用



## 注意

遥控器请使用2节7号(AAA)电池

## 部件介绍



- |         |         |        |
|---------|---------|--------|
| 1 触控按键  | 2 红外接收窗 | 3 显示屏  |
| 4 RCA输出 | 5 同轴输入  | 6 光纤输入 |
| 7 USB输入 | 8 蓝牙天线  | 9 电源输入 |
| 10 电源开关 |         |        |

### • 触控按键:

短按, 切换输入模式; 长按, 开关机

### 蓝牙操作说明

- **连接:** 将输入源切换至蓝牙, 打开手机蓝牙功能, 搜索“SMSL SU-6”, 搜索到后点击配对连接, 当手机显示“已连接”则已连接成功。
- **重连:** 在使用蓝牙过程中, 如果失去连接, 例如: 外出, 然后回来, 有些手机不会自动重新连接, 在这个时候, 长按遥控器上的蓝牙按键就可以重新连接。

### 操作说明

- 使用本产品时, 请用带屏蔽的RCA线材。

## 操作说明

### 1. 主界面

- 开机时会显示 **SUB** 意思为SU-6。
- 在切换输入会显示



- 在调节音量时,显示音量大小。
- 在静音时,会闪烁显示当前音量。
- 在播放时,会显示当前音频文件采样率。

注\*当播放歌曲为DSD格式时显示 **DSD**

## 功能介绍

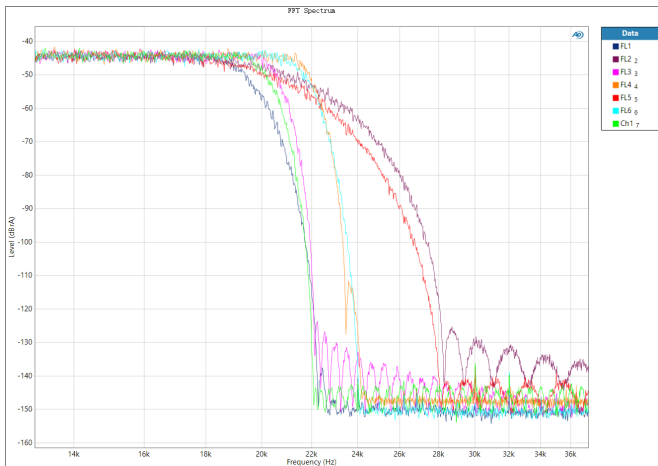
### INPUT (输入方式)

- USB (USB输入)
- OPTICAL (光纤输入)
- COAXIAL (同轴输入)
- BLUETOOTH(蓝牙输入)

## 功能介绍

### PCM FILTER (PCM滤波器)

- FL1 (修正最小相位快速滚降)
- FL2 (线性慢速滚降)
- FL3 (Apodizing 变迹滤波器)
- FL4 (最小相位快速滚降)
- FL5 (最小相位慢速滚降)
- FL6 (线性快速滚降)
- FL7 (Brickwall 混合滤波器)





## 功能介绍

### ■ DPLL (数字锁相环)

- DPLL 1~9,数值越低,时钟抖动越小

这个DPLL设定是ESS系列产品特有的功能,它可以调整芯片内部DPLL数字锁相环电路的带宽,使芯片在抗时钟抖动和输入宽容度之间达到一个平衡。

它的作用:

- 在输入信号的时钟稳定度好的情况,可以减小这个值,这样系统的时钟性能更佳;
- 在输入信号的时钟稳定度不好的情况下,声音有可能会有中断的现象,增大这个值可以避免声音中断现象的发生!特别是使用电视作为信号源时。

### ■ BRIGHTNESS (显示屏亮度设置)

- LEVEL 1 ~ LEVEL 5

# S.M.S.L



## SU-6

### USER MANUAL



The contents of this manual may be changed with the edition,  
and are subject to change without notice.

Ver 1.0

## Safety Notes

- Install this unit in a well ventilated, cool, dry, clean place-away from direct sunlight, heat sources, vibration, dust, moisture, or cold..
- Use the voltage specified on this unit Only. Using this unit with a higher voltage than specified is dangerous and may cause fire , damage to this unit, or personal injury. Our company will not be held responsible for any damage resulting from the use of this unit with a voltage other than that specified.
- Do not attempt to modify or fix this unit by yourself. Contact a person or customer service when any service is needed. The cabinet should never be opened for any reason.
- When not planning to use this unit for long periods of time (i.e. when going on vacation), disconnect the power cable from the AC wall outlet.

### **Important note:**

The product specifications and information mentioned in this manual are for reference only. The content of this manual is subject to change without notice.

## Warranty Terms

### 1.The Term of Service

Foshan Shuangmusanlin Technology Co., Ltd promises to offer good-quality products. If the product is broken in 7 days after purchasing when you use it normally, you can choose to send it back for return, replacement or repairing (only the product does not affect the second sales can be returned ). Repairing for free in one year if you use it normally.

2.Date of purchase is in accordance with the date on invoice or receipt used by seller, and if you buy it on line, you can show the screenshot of trade.

3.If an inappropriate usage causes the unit damaged, the warranty will be void. As below.

- All damages by inappropriate use, including using it under non-normal working environment or without following the instructions.
- Dismantling, refitting, repairing by user in private.
- Causing damage by using some fittings instead of the designative or accredited ones.
- Cannot provide credible proof of purchase.

4.Sending it back to our company for repairing.

5.Contact your S.M.S.L Audio reseller for a return or replacement.

## Features

- Mini size design, very suitable for desktop use;
- CNC integrated milling process, simple and stylish;
- ESS Technology high-end D/A chip ES9038Q2M;
- Qualcomm latest Bluetooth chip supports LDAC 24bit/96kHz, APTX/HD, SBC, AAC;
- 4x high-end dual op amp OPA1612 and a large number of audio grade components;
- The 2nd generation XMOS solution supports DoP256 and native DSD512, and PCM supports up to 32bit/768kHz;
- Audio clock processing circuit, greatly reducing the clock jitter;
- All input ports (except Bluetooth) support DSD transmission, coaxial and optical supports DoP64;
- Built-in specially designed low-noise switching power supply;
- Built-in discrete component linear power supply and multiple low-noise power supplies for analog circuits;
- High-quality gold-plated input and output connection terminals;
- Tempered glass display panel which will last forever!
- Japan Audio Association (JAS) Hi-Res certification;
- Equipped with full-function remote control.

## Specifications

Input .....	USB / Optical / Coaxial / Bluetooth		
Output .....	RCA		
THD+N .....	0.0001%(-120dB)		
Dynamic range .....	RCA	125dB	
SNR .....	125dB		
Output impedance .....	<10Ω		
USB transmission .....	Asynchronization		
USB compatibility .....	Windows 7 / 8 / 8.1 / 10, Mac OSX, Linux		
Bit depth .....	USB	1bit, 16 ~ 32bit	
	Optical / Coaxial	1bit, 16 ~ 24bit	
Sampling rate .....	USB	PCM	44.1 ~ 768kHz
		DSD	2.8224 ~ 22.5792MHz
	Optical / Coaxial	PCM	44.1 ~ 192kHz
		DSD	DSD64(DoP)
Bluetooth specification.....	BT 5.0(support SBC,AAC,aptX,aptX HD)		
Power Consumption .....	.5W		
Standby power .....	<0.5W		
Size .....	140X28X105mm (WxHxD)		
Weight .....	0.35kg		

Specifications are subject to change without notice.

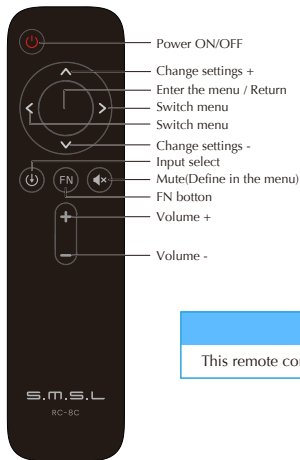
### Note

Firmware and driver download:  
<http://www.smsl-audio.com/cn/download.asp>

## Remote control

- Install 2 x AAA batteries as instructions.
- When using the remote control, point it toward the remote control signal receiver on the main unit from a distance of 5 m (16 ft) or less. Do not place obstructions between the main unit and the remote control.
- The remote control might not work if the remote control signal receiver on the unit is exposed to direct sunlight or bright light. If this occurs, try moving the unit. Beware that use of this remote control could cause the unintentional operation of other devices that can be controlled by infra.

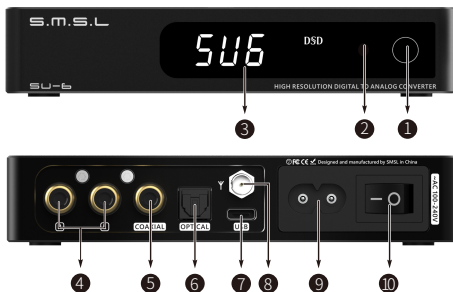
## Operating the remote control



### Note

This remote controller use 2 x R03/AAA batteries.

## Display Interface and Instructions



- |                 |                     |                 |
|-----------------|---------------------|-----------------|
| 1 Touch button  | 2 Remote window     | 3 Display       |
| 4 RCA output    | 5 Optical input     | 6 Coaxial input |
| 7 USB input     | 8 Bluetooth antenna | 9 AC IN         |
| 10 Power switch |                     |                 |

### Note:

#### Touch Button\*

- Short press : Select Input
- Long press : Power ON/OFF

#### Bluetooth operating instructions\*\*

##### Connection:

- Step 1: Switch the input source in the SETTING MENU or press the Bluetooth button of the remote;
- Step 2: Turn on the Bluetooth function of the mobile phone, search for "SMSL SU-6", and tap to pairing. When the mobile phone displays "connected", it has been successfully connected.

##### Re-connection:

When you had lost the connection with the SU-6, for example, going out, and back home, some phones will not re-connect the SU-6 if the SU-6 has not been re-boot, so you can long press the "FN" button on the remote to Re-connect.

#### Note\*\*\*

When using this product, please use cable wire with shield.

## User interface

### 1. Main

- When it is turned on, it will show **SUB**
- When switching input will be displayed (Press the "Input Select" key on the remote control or press the "Power Function" key for input selection)



- When adjusting the volume, the volume is displayed.
- When muted, the current volume flashes.
- When it played, the current audio file sampling rate will be displayed.

Note: when playing music is DSD format, it will display **DSD** .

## Instructions

### ■ INPUTS

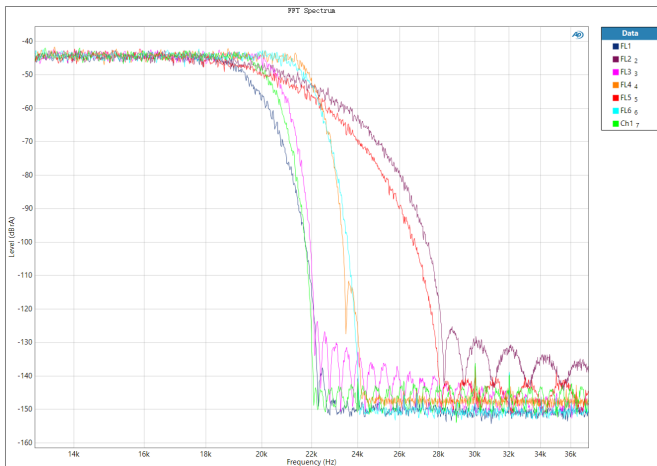
- USB
- OPTICAL
- COAXIAL
- BLUETOOTH



## Instructions

### PCM FILTER

- FL 1 (corrected minimum phase fast roll-off filter)
- FL 2 (linear phase slow roll-off filter)
- FL 3 (apodizing fast roll-off filter)
- FL 4 (minimum phase fast roll-off filter)
- FL 5 (minimum phase slow roll-off filter)
- FL 6 (linear phase fast roll-off filter)
- FL 7 (brick wall filter)



## Instructions

### ■ DPLL

- DPLL 1-9, the smaller the number, the better the performance against clock jitter.

This DPLL setting is a special function of ESS series products. It can adjust the internal DPLL digital phase locked loop circuit Bandwidth, so that the chip achieves a balance between anti clock jitter and input tolerance.

Its function:

- When the clock stability of the input signal is good, this value can be reduced, so that the clock performance of the system is better;
- When the clock stability of the input signal is not good, the sound may be interrupted. Increase this value can avoid the sound interruption! Especially when using TV as signal source!

### ■ BRIGHTNESS

- LEVEL 1~ LEVEL 5